



**ASEAN HSSE**  
**LOSS PREVENTION &**  
**PROFESSIONAL DEVELOPMENT**  
**CONFERENCE & EXHIBITION**  
**18-19 SEPTEMBER 2019**  
**ISTANA HOTEL, KUALA LUMPUR**  
**MALAYSIA**

*“Operational Excellence Through HSSE Innovation”*

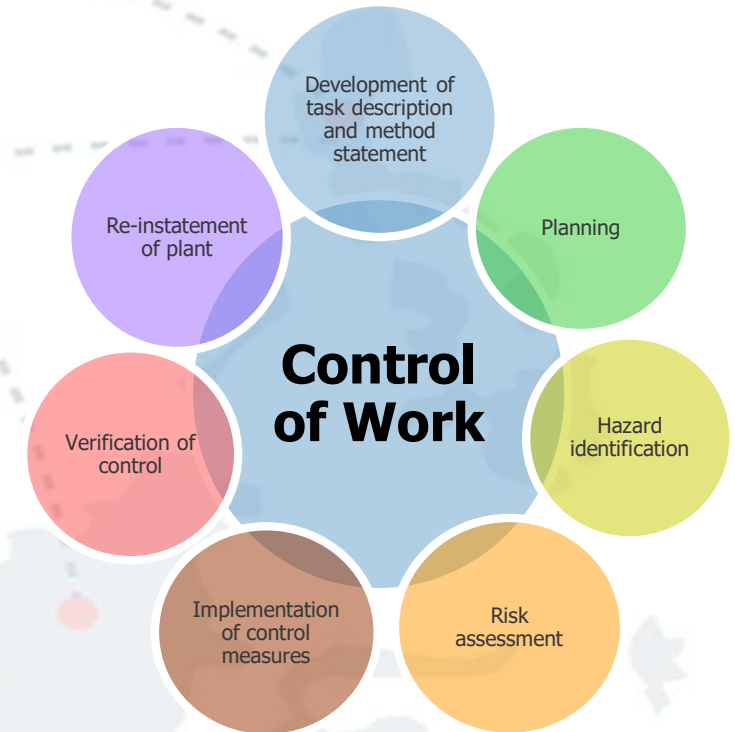


# CONTROL OF WORK (CoW) PROGRAM

**Abdul Razak Mohammad**

HSSEIA Manager

Petrofac (Malaysia-PM304) Limited



## Introduction

- Triggered by a number of High Potential Incidents (HiPo) across the Petrofac Group worldwide, Petrofac Malaysia introduced and implemented Control of Work (CoW) in May 2015.
- Discovery from studies conducted indicate the root cause is from lack of control of work.
- CoW is a mandatory process for any activities at all Petrofac facilities - onshore and offshore.

## Objective

- Create a work environment that is safe for all Petrofac employees, contractors and sub-contractors.
- Establish procedures and processes and identification of risks.
- Instill a sense of responsibility within Petrofac employees for the safety and wellbeing of people and integrity of asset.
- Include CoW into Petrofac's Standard Operating Procedure for all its operated sites.

## Control of Work Gaps

Incident studies show that root causes to a HiPo Incident is due to lack of control of work that involves:

- Poor planning
- Inability to understand the scope of work/job method statement
- Failure identify hazards
- Unable to understand proper control measures
- Lack of verification by supervisor

The CoW Program is designed to close the 5 Gaps, with the aim to ensure all works are executed safely.



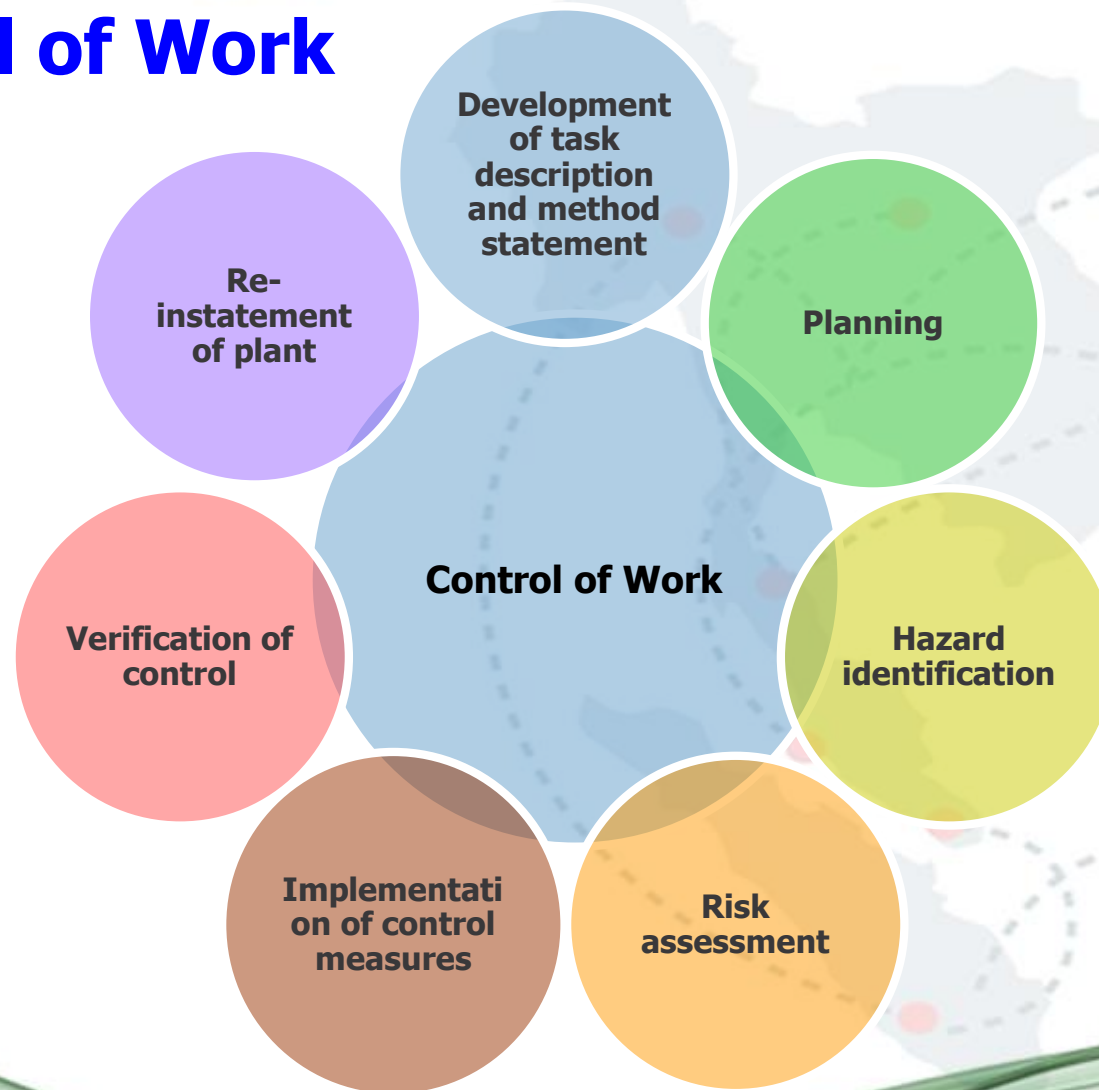
## CoW Training Program

- Compulsory to all employees including contractors & subcontractors.
- One (1) day training program (theory, practical & assessment)
- Valid for 3 years
- Monthly and Annually refresher CoW briefing





# Control of Work



## LIFE-SAVING RULES

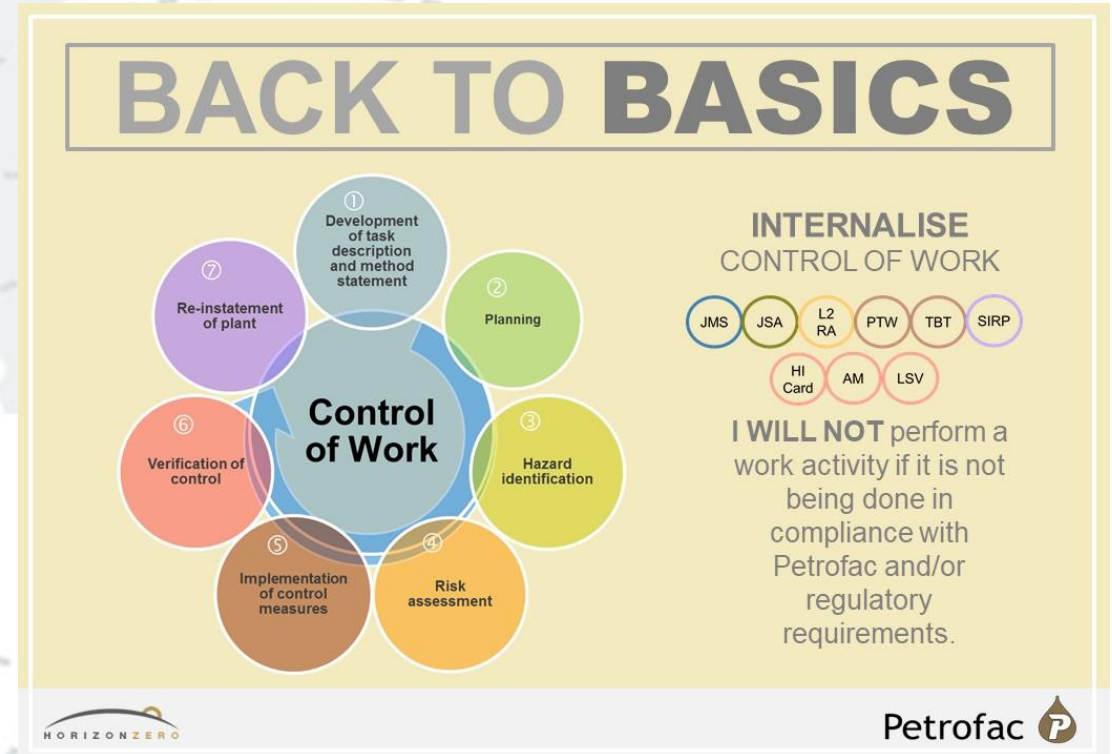
We are moving to the nine Life-Saving Rules





## Challenges

- Incompetent personnel in developing Job Method Statement (JMS), Job Safety Analysis (JSA) / Level Two Risk Assessment (L2RA).
- Inconsistent CoW implementation at worksite.
- Managing contractor personnel due to last minute replacement.





## Achievements

- 500 personnel attended CoW Training Program.
- 80% reduction of HiPo Incidents as per below table:

Incident Category	Year						
	2013	2014	2015	2016	2017	2018	2019 Q1 & Q2
HiPo Incident	14	11	3	1	0	1	0

Before CoW  
Program

After introduction of CoW Program

High Potential Incident (HiPo) is based on Near Miss incidents, First Aid Cases, Medical Treatment & Loss Time Injury that can cause a serious injury or fatality to people, major property damage and major loss of primary containment.







# Summary





## Acknowledgements

- Petrofac Group IES, UK
- Petrofac (PM304-Malaysia) Limited
- Petrofac HSSEIA Department
- Petrofac Warehouse Kemaman Supply Base (KSB)
- Offshore Crew West Desaru & Cendor FPSO





**ASEAN HSSE**  
**LOSS PREVENTION &**  
**PROFESSIONAL DEVELOPMENT**  
**CONFERENCE & EXHIBITION**  
**18-19 SEPTEMBER 2019**  
**ISTANA HOTEL, KUALA LUMPUR**  
**MALAYSIA**

*“Operational Excellence Through HSSE Innovation”*

**Welcome Any Questions.**  
**Thank You.**

